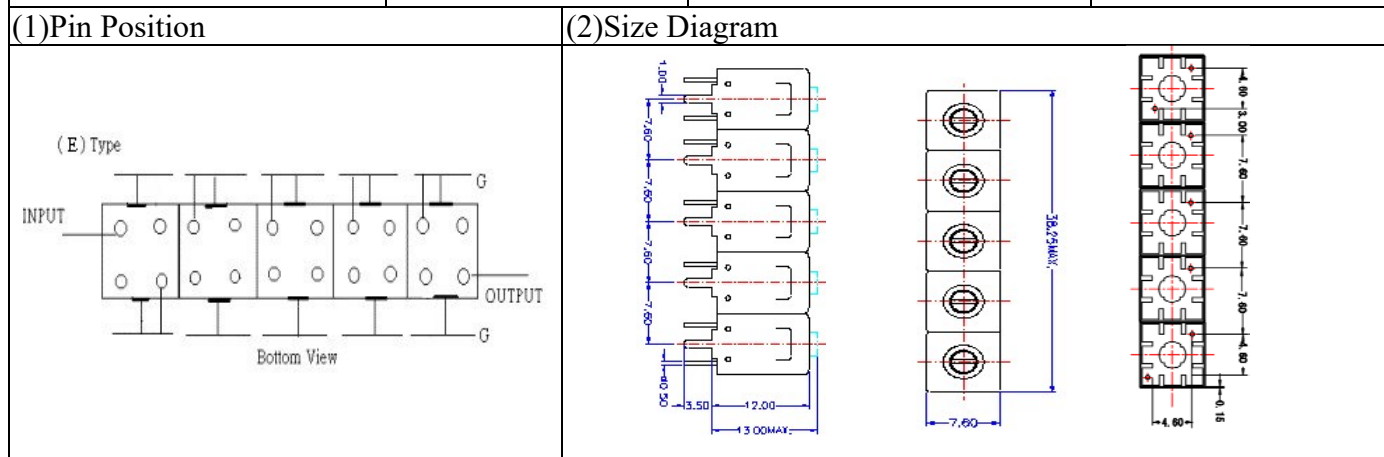


VHF UHF Helical Filter Specification Sheet

| | | | |
|----------------------|-------------|-----------------------|-----------------|
| Customer Name | | Temwell's Part No. | TV6557E-836.5M |
| Approval No. /dated | 201912011CD | Temwell's Print Name. | 6557E 836.5M |
| Work Instruction No. | 201912011CD | Date | Jan.17.2020 |



(3) Electric Character

| Item | Specify | Performance |
|------------------------------|-----------------|-----------------|
| Center Freq.(Fo) +/- 0.5 % | 836.5 MHz | 836.5 MHz |
| Insertion Loss | Typ. 4.0 dB | 3.11 dB |
| -3 dB Bandwidth | Typ. 25 MHz | 29.2 MHz |
| Sensitivity (Attenuation) | Fo - 50 MHz | Typ. 53 dBc |
| | Fo + 50 MHz | Typ. 46 dBc |
| | Fo - ()MHz | Typ. dBc |
| | Fo +()MHz | Typ. dBc |
| Return Loss | Min. 12 dB | 29.9 dB |
| Ripple | < 1 dB | dB |
| Impedance | In / Out : 50 Ω | In / Out : 50 Ω |

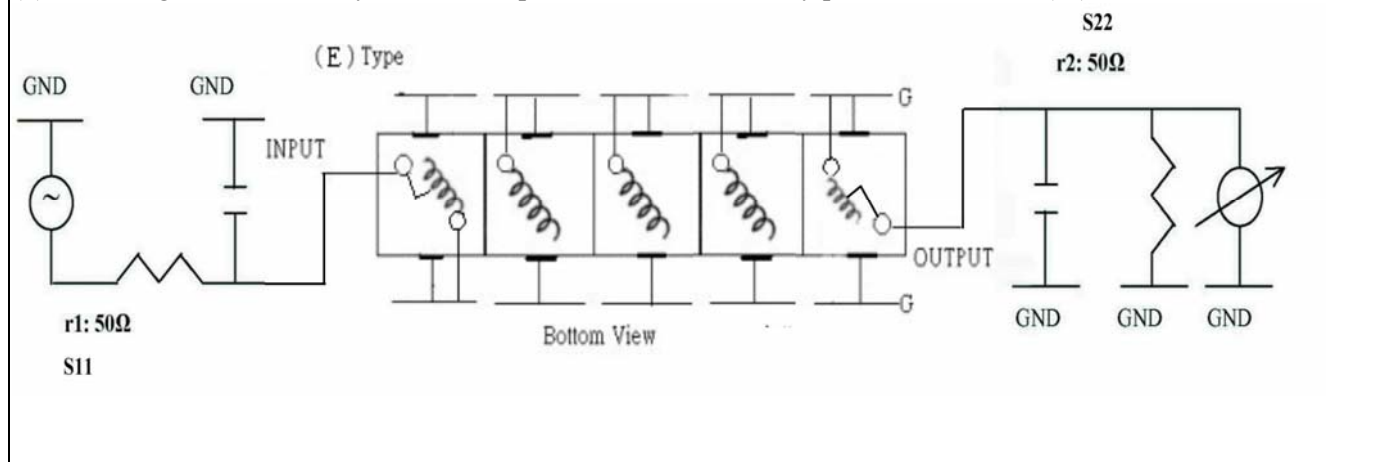
(4) Torque for Tuning Screw > 60gf · cm

(5) Temperature Condition:

| | |
|-----------------------|---------------|
| Operating Temperature | 0°C ~ +60°C |
| Storage Temperature | -20°C ~ +70°C |

(6) Input Power > 1 Watt

(7) Measuring Circuit: ※Easy to match Impedance S11/S22 50Ω by parallel with about(- -).



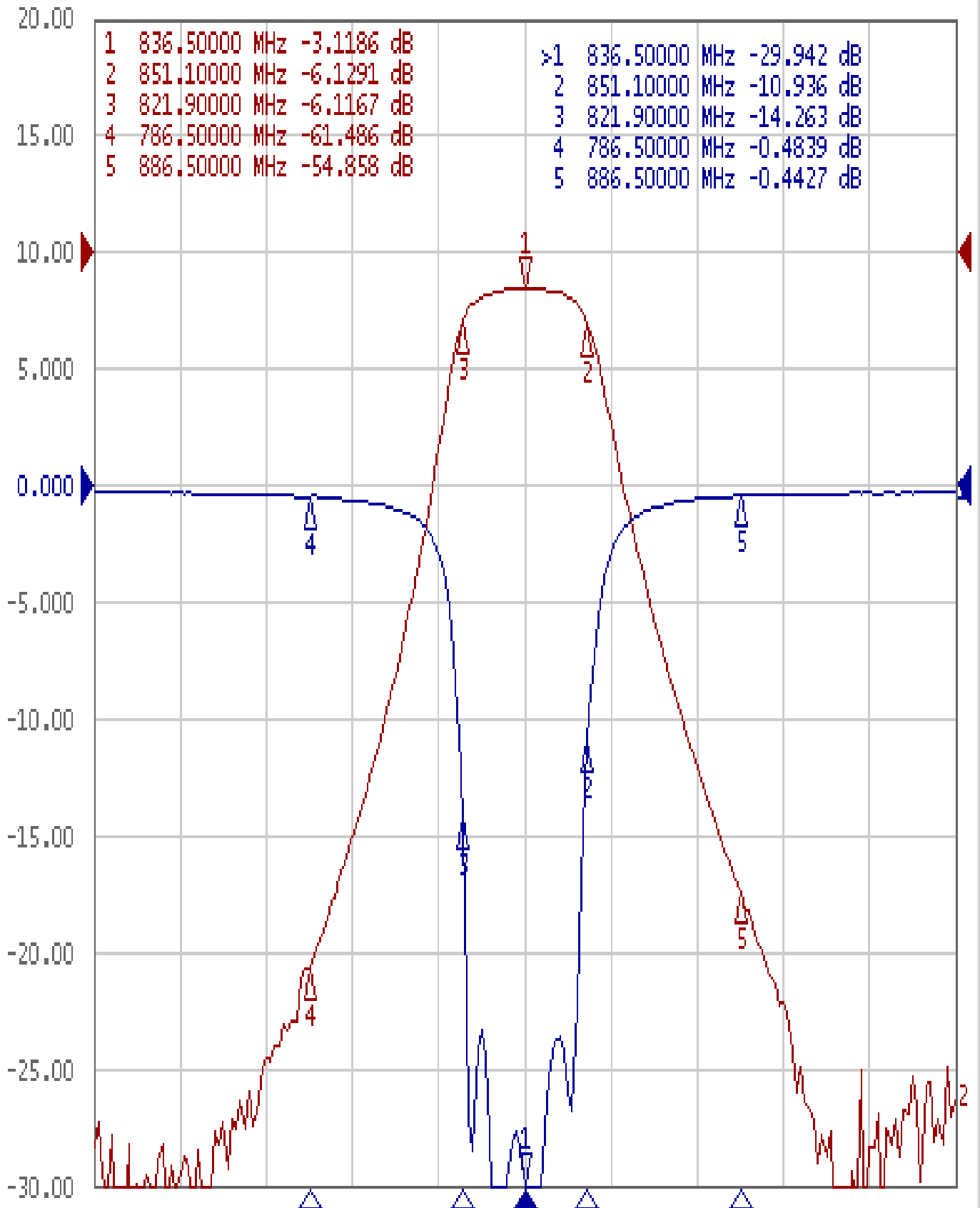
| | | | |
|-----------------------|-------------------------|----------------------|---|
| Approval C.Y.Chang | Supervisor C.K.Chang | Designer W.W.Wang | Aperture size 7H5S(4*5.6)(5.63)(J1) 7H046LB5/7H046LB4.3 聚 3 |
|-----------------------|-------------------------|----------------------|---|

TEMWELL CORPORATION

Performance-TV6557E-836.5M

201912011CD

Tr1 S11 Log Mag 5.000dB/ Ref 0.000dB [F2]
Tr2 S21 Log Mag 10.000dB/ Ref 0.000dB [F2]



1 Center 836.5 MHz

IFBW 70 kHz

Span 200 MHz Cor !