

## DR Filter PRELIMINARY SPECIFICATIONS

SMD  
 Bandpass  
 Date: 2024.05.13

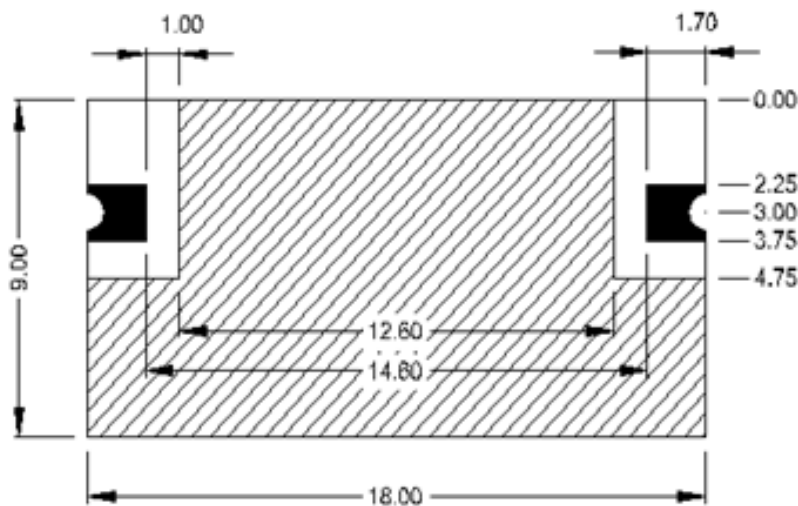
Written by	Checked by	Approval
FL Lai	MY Chen	CK Chang

### ELECTRICAL SPECIFICATIONS

ITEM	SPEC	UNIT
1	Center frequency	2450MHz
2	Bandwidth	100 (2400~2500MHz)
3	Insertion Loss	0.5
4	Ripple	0.3
5	Return Loss	15
6	Attenuation	45 @5000MHz~6000MHz
7	Power	20
8	Impedance	50
9	Operating Temperature	-40°C~70°C

### MECHANICAL SPECIFICATIONS

BOTTOM VIEW



SIDE VIEW



 I/O PORT  
 GROUND  
 TOLERANCE : ±0.30  
 Unit : mm

